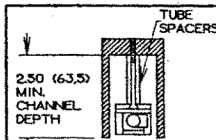
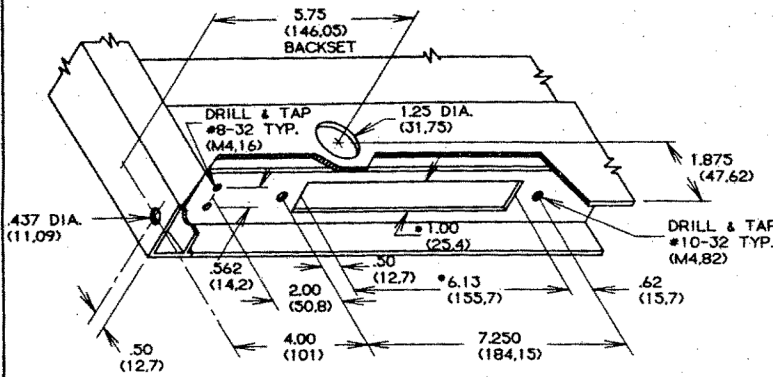


Adams Rite 1861 - Bottom Rail Deadlock

BOTTOM RAIL PREPARATION

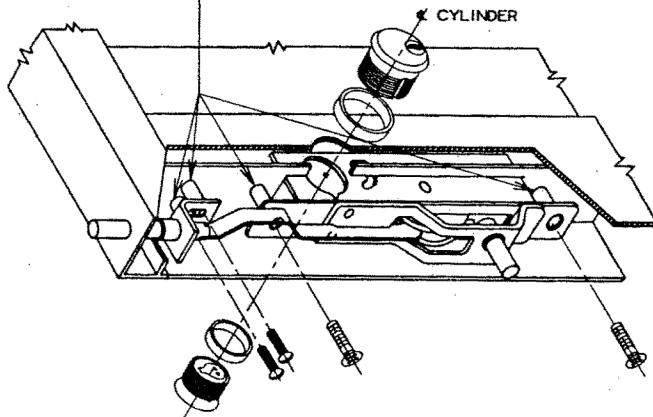


*BOTTOM DOOR RAILS WITH WEB WILL REQUIRE MACHINING AS SHOWN SECTION 3 POSITIONING OF WEB WILL DETERMINE TUBE SPACER REQUIREMENT AND TUBE SPACER LENGTH.

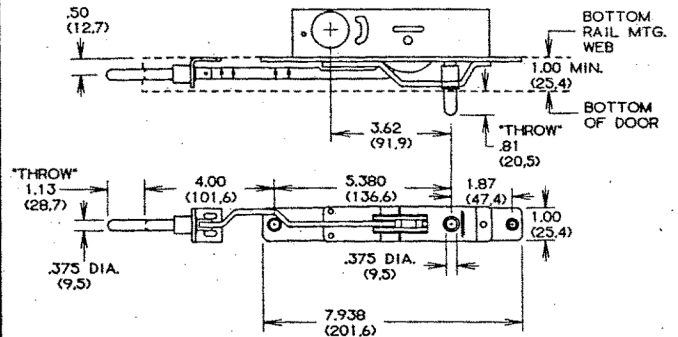
3

MS 1861-02 LOCK & CYLINDER INSTALLATION

TUBE SPACERS MAY BE REQUIRED TO POSITION LOCK MECHANISM



7



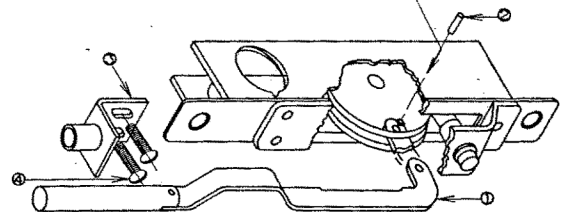
NOTE: UNIT ILLUSTRATED IS MS 1861-02 (BOTH HORIZONTAL & VERTICAL BOLTS INCLUDED) CATALOG NUMBER FOR VERTICAL BOLT OPERATION ONLY IS MS 1861-01. CONVERSION KIT NO.4014 AVAILABLE TO CONVERT MS 1861-01 TO MS 1861-02. SEE SECTION 5 BELOW.

4

4014 CONVERSION KIT CONSISTS OF:

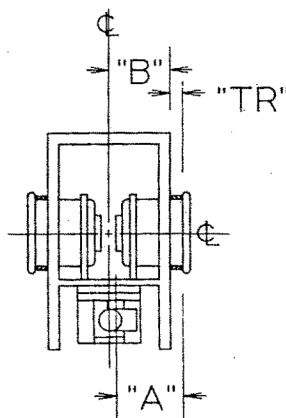
- ① ARM & BOLT ASSEMBLY
- ② ASSEMBLY PIN
- ③ BOLT GUIDE BRACKET
- ④ MOUNTING SCREWS

TO ASSEMBLE, PRESS PIN THRU DISC AND ARM.



5

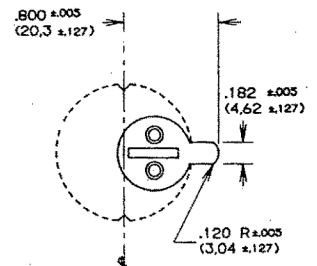
CYLINDER TRIM RING



TRIM RING THICKNESS (TR) WILL VARY WITH SPECIFIC CYLINDER MAKE, NUMBER OF PINS & BOTTOM RAIL THICKNESS TO DETERMINE TRIM RING THICKNESS USE THE FOLLOWING FORMULA.

$$TR = A + .125 - B$$

2



MS 1861 SERIES LOCKS ARE OPERABLE BY ANY STANDARD 1 5/32" (25.3) DIAMETER MORTISE CYLINDER WITH SPECIAL MS CAM DIMENSIONED AS ABOVE. CYLINDERS WITH MS CAMS CAN BE READILY OBTAINED FROM MOST CYLINDER MANUFACTURERS.

6

DATE: REDRAWN WITHOUT CHANGE 5-8-84

ADAMS RITE MANUFACTURING COMPANY

CITY OF INDUSTRY, CALIF. 91749

MS 1861 SERIES DEADLOCK