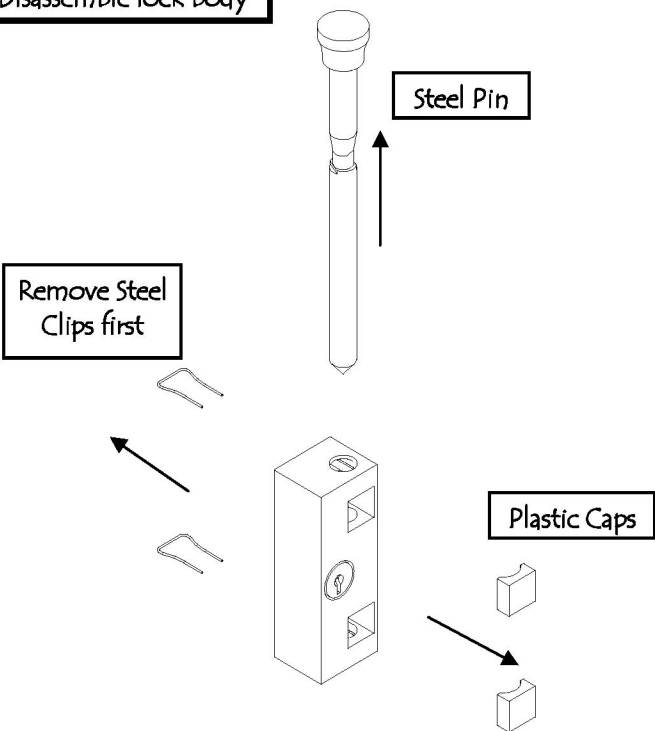


EMTEK 20601x - Locking Door Bolt

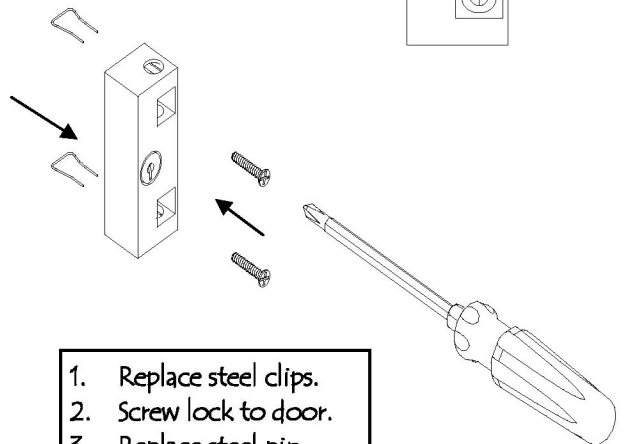
Installation Instructions-Patio Door Lock

Disassemble lock body



Install & Reassemble Lock

Use 5/32 drill two places to accept #10-32 sheet metal screws (provided).



1. Replace steel clips.
2. Screw lock to door.
3. Replace steel pin.
4. Replace plastic caps.

EMTEK
ASSA ABLOY

IN4-PATIO DOOR

REV. 03-12-09