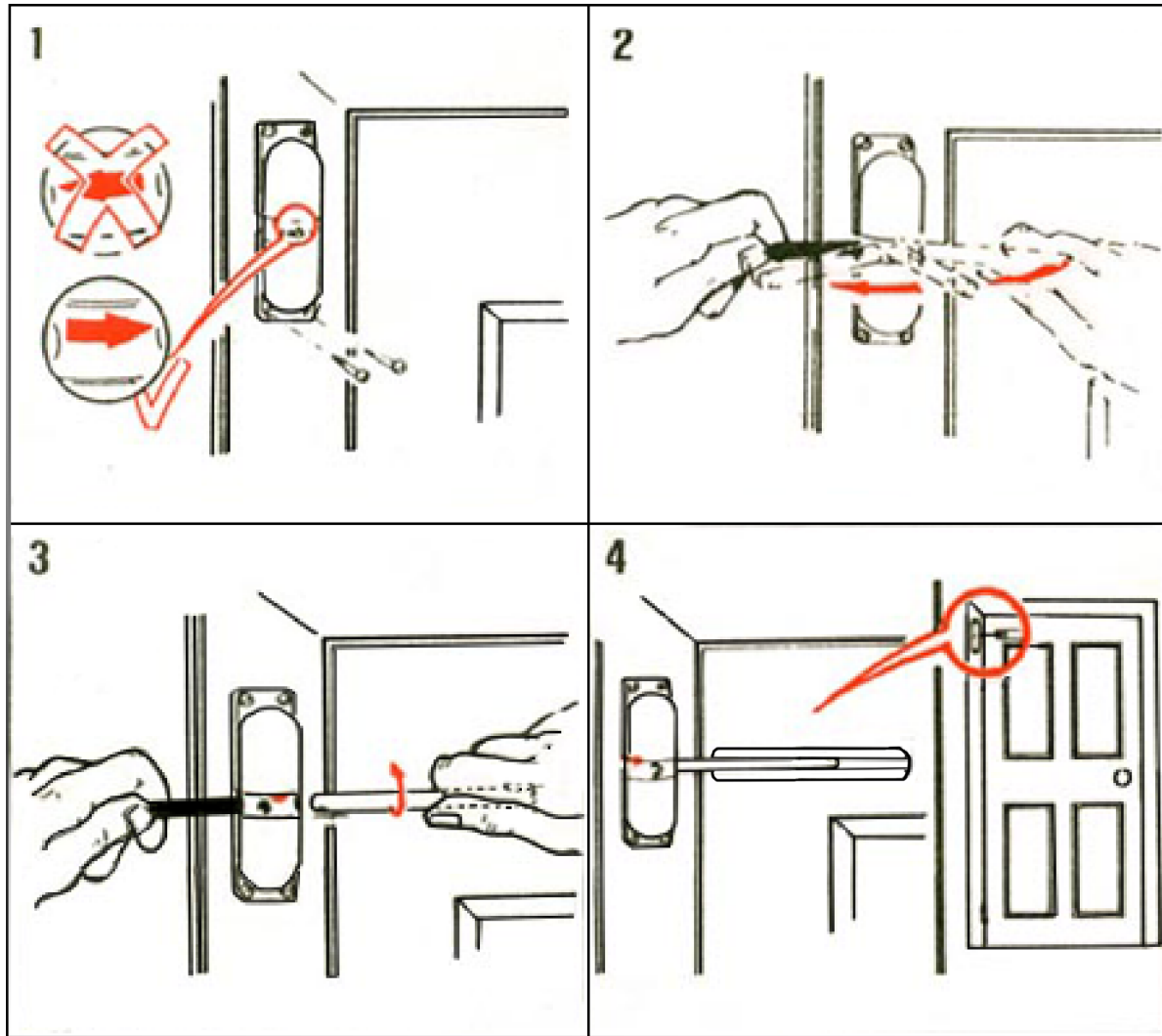


GLO-TC931 Door Closer

Instructions - This Closer is fitted vertically to the jamb on the hinged side of your door. If fitted to a panelled door, the Closer must be positioned to work on the top centre or bottom rail. **Caution:** If unit is to be used with internal hollow core door ensure unit is mounted where the arm will be in a solid section of the door. Positioning at the top of the door is generally the best option.

The surface of the jamb where the Closer is fitted must be flat. Uneven surfaces will cause damage to the body of the Closer when the screws are tightened. Fix the Closer in position with the 4 screws supplied, making sure that the body is square to the door and that the arrow points in the direction of the door handle.



Pressure Setting - Turn the centre boss away from the door with the steel bar supplied and screw the arm into the hole nearest the door. **DO NOT OVER TIGHTEN.**

To increase tension: Repeat the operation one hole at a time.

To protect the door from marking: Fix the slide plate supplied into position.